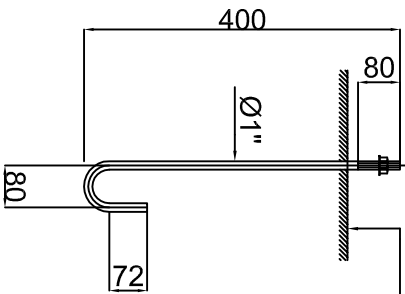


CHUMBADOR CHU 1-02 (64x)
Ø 1"

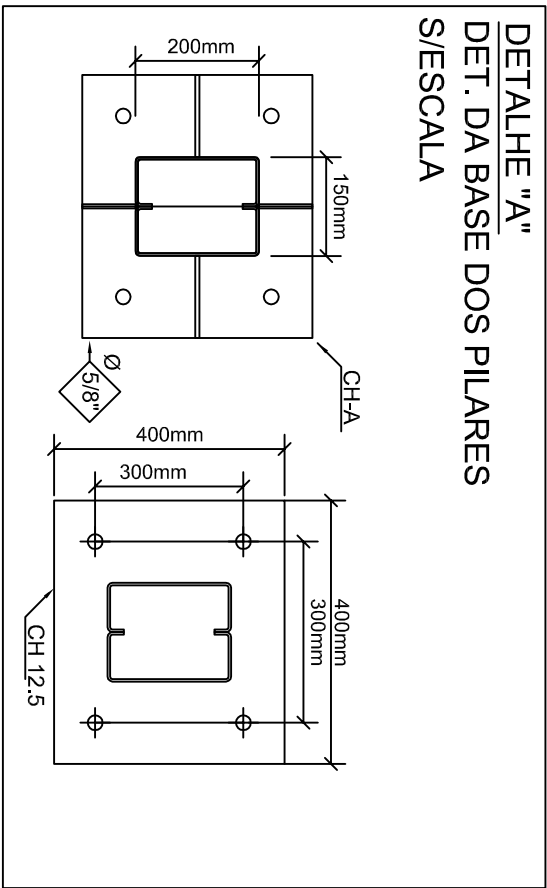
Ø 1"

TOPO DO CONCRETO BRUTO

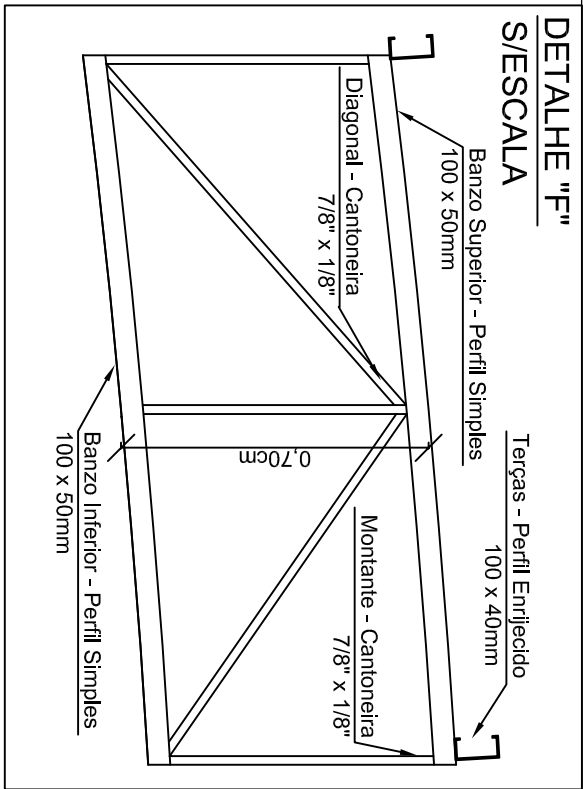


DETALHE "B" FIXAÇÃO DOS PILARES S/ESCALA

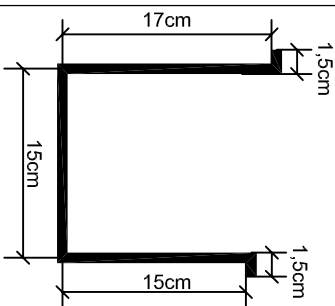
DETALHE "A" DET. DA BASE DOS PILARES S/ESCALA



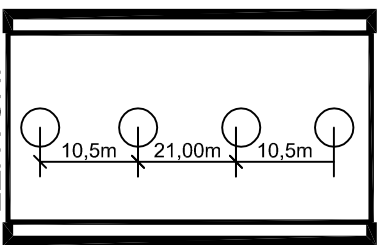
DETALHE "F" S/ESCALA



DETALHE "E" CALHA DE CHUVA GALVANIZADA Ø 0,50mm S/ESCALA



MONTANTE

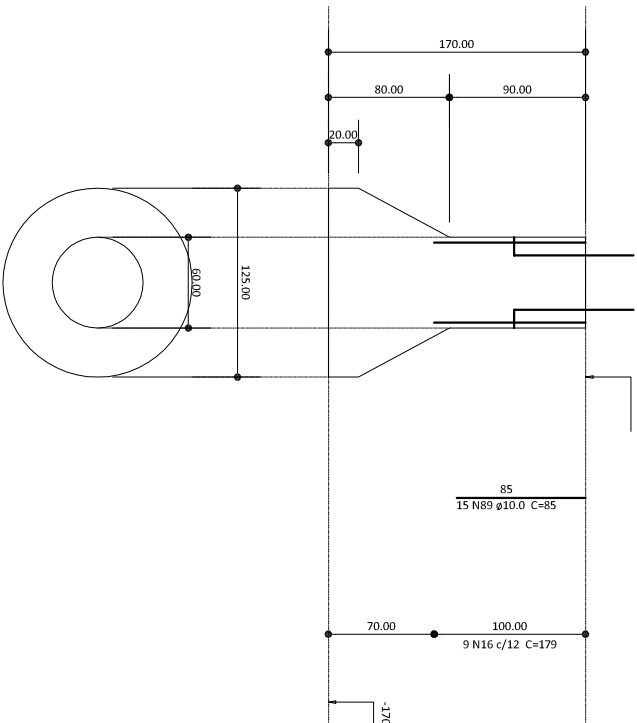


JUSANTE

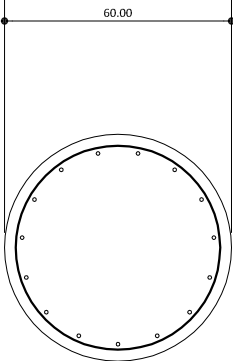
EM TODA A EXTENSÃO
DA CALHA, DEVERÁ
CONTER 4 SAÍDAS DE
ÁGUA DE Ø 100mm

TUBULÕES DOS PILARES PERIFÉRICOS

CORTE
ESC 1:50

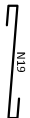
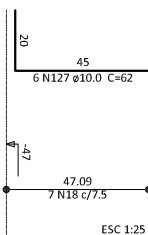
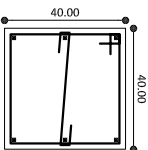


SEÇÃO
ESC 1:20

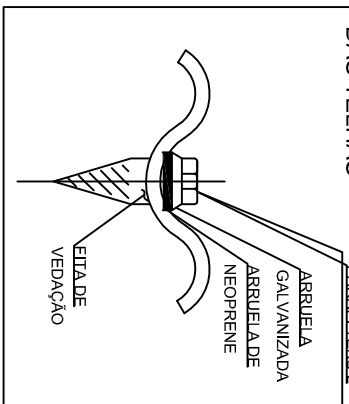


PILARES PERIFÉRICOS

BALDRAME - L1
ESC 1:25



DETALHE "C" DETALHE DA COSTURA DAS TELHAS



Projeto Estrutural

Título do Projeto			
Projeto Estrutural			
Endereço			
COBERTURA DA QUADRA POLIESPORTIVA - E.E. JAIME CALMETO			
Alameda Dom Oscar de Oliveira - Desterro do Melo - MG			
Escalas			
Indicadas	Área	Data	FOLHA
	792.00 m²	Março de 2015	05/05
Projeto			
CREAM.G.: 66717/D Luiz Eduardo Guerson Ferreira - Eng. Civil			